

BRIDGER | CARR

A r c h i t e c t s



Allow us to introduce ourselves.

Hello. We are Andy Bridger & Deborah Carr; Bridger Carr Architects.

In 2012 we founded our practice following many years of working together on specialist healthcare schemes.

Our practice is defined by our experience and expertise in delivering highly complex buildings for multi-faceted Clients in live working environments.

This booklet is a guide to our design philosophy, shown through some of the buildings we have created before and since we formed Bridger Carr Architects.

Our philosophy is about you and your people, about innovation, about sustainability and about the detail.

BRIDGER | CARR
A r c h i t e c t s



“Andy and Deborah are people people”

Matthew Day. Regional Partner at DSSR Consulting Engineers

Healthcare

Pharmaceutical

Higher Education

Commercial & Residential

Energy & Infrastructure

High-tech Manufacturing

Our buildings





Latest News...
Bridger Carr Architects Dental Teaching Unit,
Chapel Allerton Hospital, Leeds



Paediatric and adult dental teaching facilities



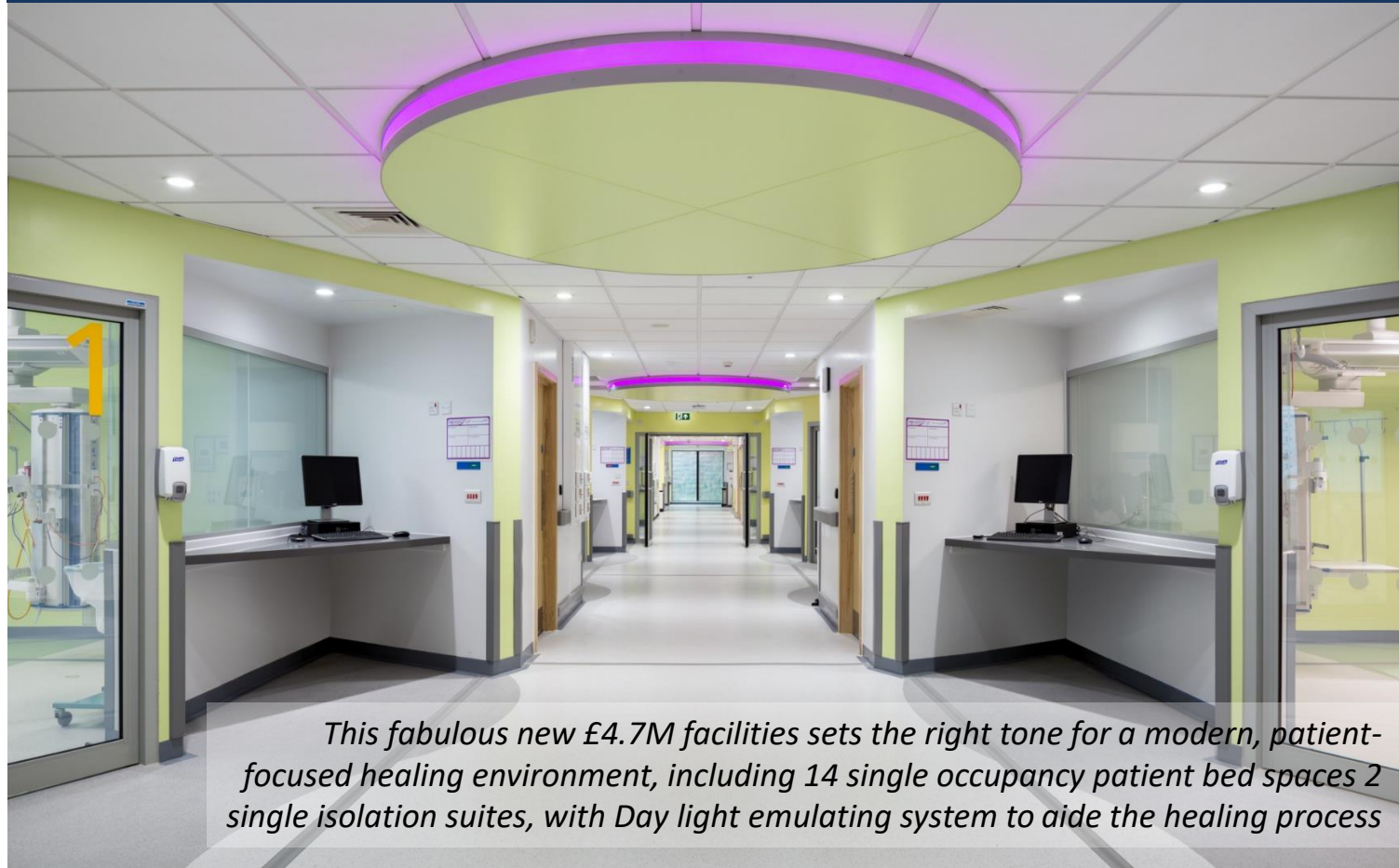
Latest News...
Bridger Carr Architects Lincoln Wing Theatres and Wards,
St James's University Hospital, Leeds



Two new Ultra Clean operating theatres into an existing nucleus Ward and a full refurbishment of a Nucleus Ward block template



Latest News... Bridger Carr Architects Critical Care Unit, Bradford Royal Infirmary



This fabulous new £4.7M facilities sets the right tone for a modern, patient-focused healing environment, including 14 single occupancy patient bed spaces 2 single isolation suites, with Day light emulating system to aide the healing process



Latest News... Bridger Carr Architects Gynaecology Unit, Liverpool Women's Hospital

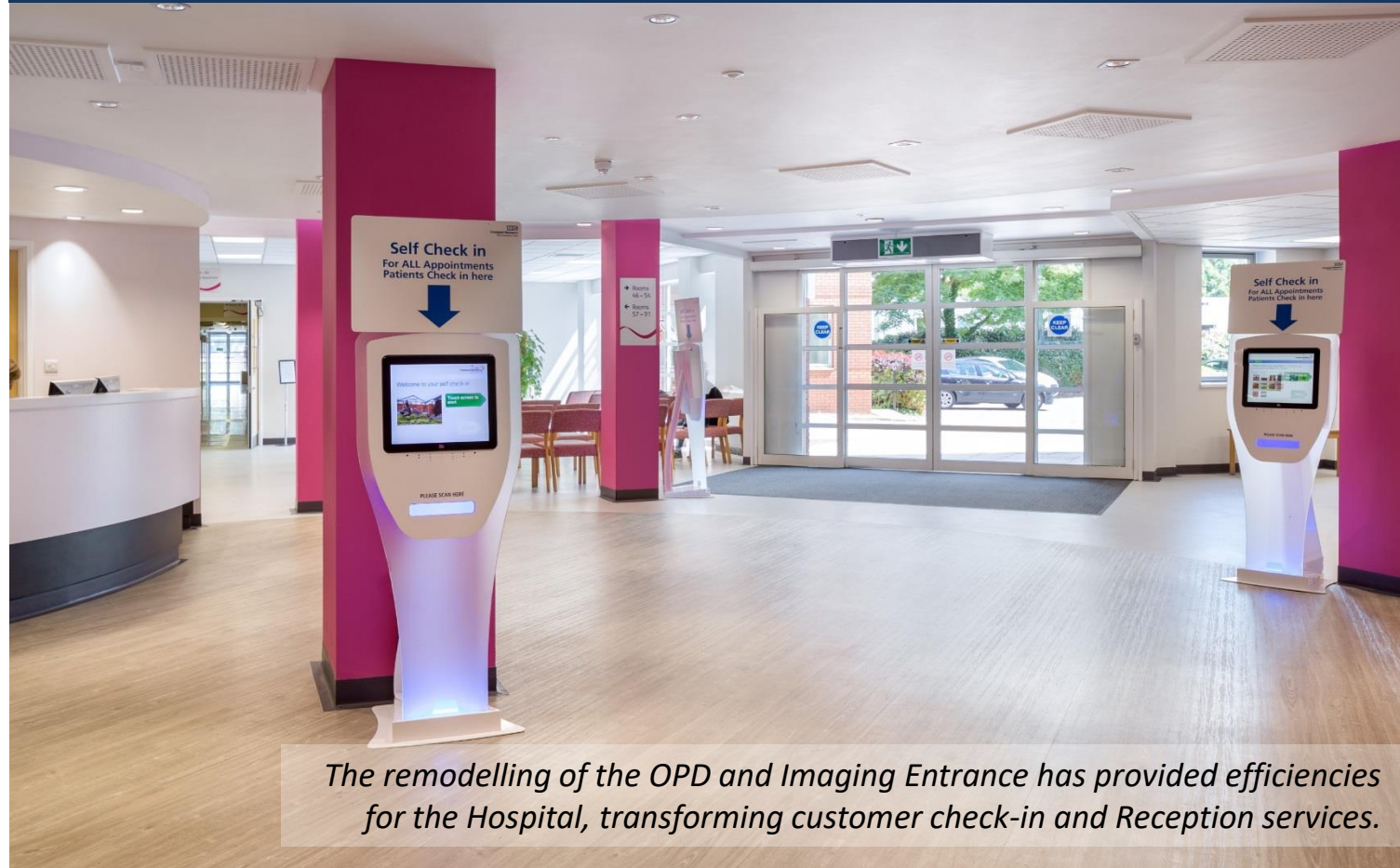


A radical design intervention into an existing Nucleus Ward will pay for itself in 10 months and continue to return savings of circa £500k per annum



The ambulance drop-off bay at Liverpool Women's Hospital has been relocated to allow the reconfiguration of the OPD and Imaging Entrance.

Latest News... Bridger Carr Architects OPD & Imaging Reception and New Ambulance Drop-off Bay. Liverpool Women's Hospital

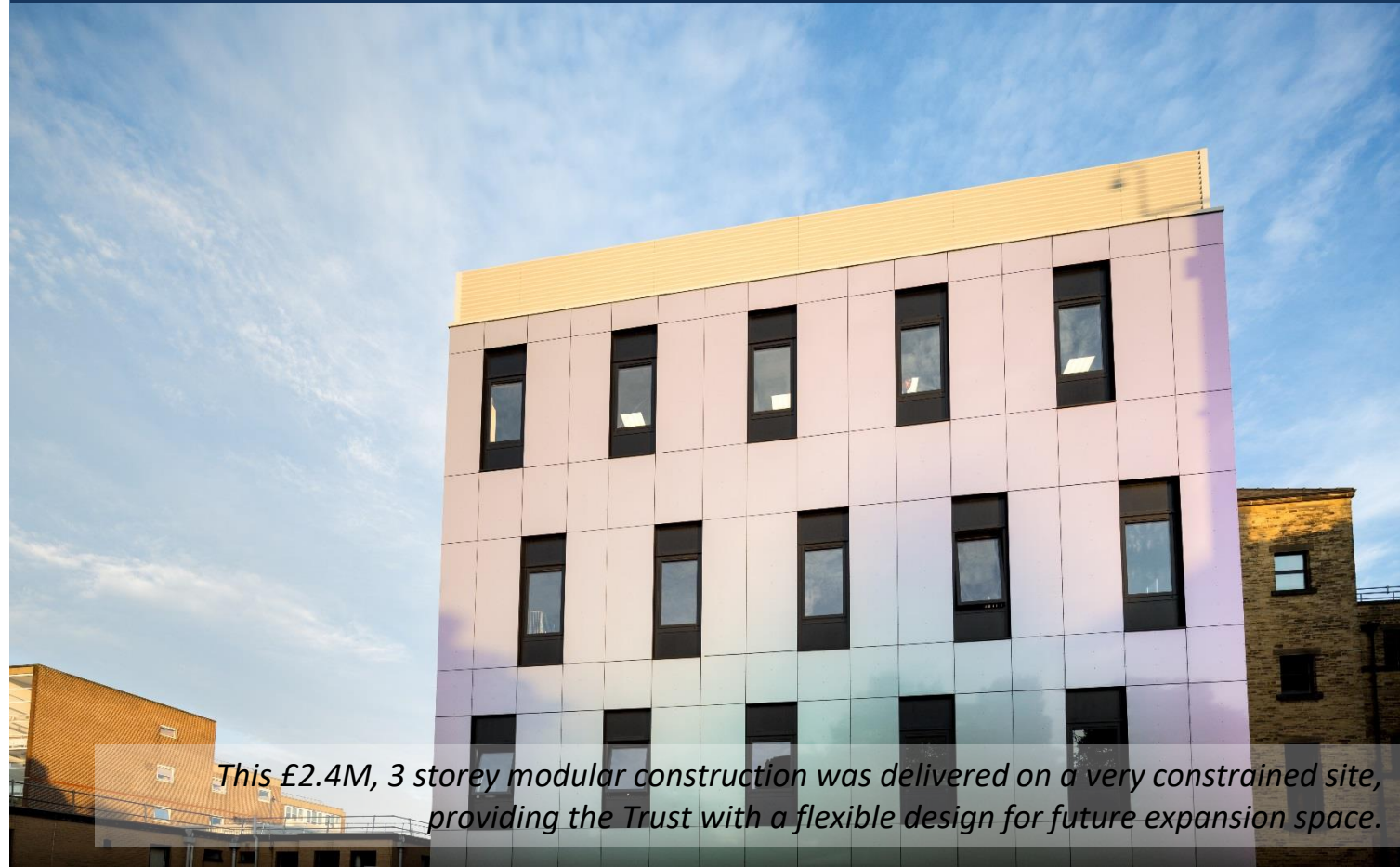


The remodelling of the OPD and Imaging Entrance has provided efficiencies for the Hospital, transforming customer check-in and Reception services.



Latest News...

Bridger Carr Architects Endoscope Decontamination Unit, Bradford Royal Infirmary



This £2.4M, 3 storey modular construction was delivered on a very constrained site, providing the Trust with a flexible design for future expansion space.



Latest News...

Bridger Carr Architects Medical Research Facility, Bradford Institute for Health Research



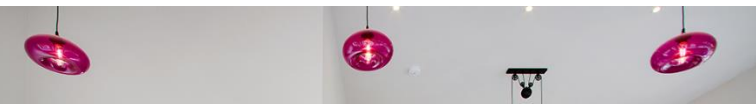
"It has been a pleasure again to work with Andy Bridger and his team. They clearly understand the needs of a modern healthcare environment, while providing striking architecture and memorable design that echo the philosophy of the innovative, high quality research that takes place within the BIHR"

Professor John Wright, Director of Research, Bradford Institute for Health Research

Latest News...
Bridger Carr Architects Multi Storey Car Park,
New Cross Hospital, Wolverhampton



*System build Multi Storey Car Park with
EV charging points and future proofed for vertical expansion.*



Latest News...

Bean Fields Barn, first phase of the development of a former farm complex in the Yorkshire Dales.



High end residential development converting redundant farm buildings and landscaping of surrounding land.

Our buildings are about you

We believe that our buildings are born out of a true understanding of our Clients and their needs.

Our focus is on you and your unique requirements in order to understand your project.

“an open, honest, focused team with a can-do attitude, has restored my faith in the construction industry”

Ian Hinitt – Bradford Teaching Hospitals NHS Foundation Trust
“Ultra Fast-Track” article. Health Estates Journal. Nov 2008.

Our buildings are about innovation in design

Through innovation we produce simple practical solutions to your complex problems. We help you to resolve your most difficult issues.

We understand the complex and highly serviced nature of healthcare estates. We bring our knowledge to your master planning, infrastructure and energy projects, to ensure they are fully integrated into your estate.

“I am very proud of this development...10 out of 10”

Ken Bremner, Chief Executive, City Hospitals Sunderland NHS Foundation Trust.



120 Bed Ward & 18 Bed ICU, Sunderland Royal Infirmary. 2011. By Andy Bridger and Deborah Carr whilst at HDP.

Our buildings are about innovation in construction

Any construction method can significantly impact on your estate, your staff and your patients. By choosing the most appropriate form of construction the impact can be minimised. We have the experience of delivering steel frame, concrete frame, modular systems and traditional forms of construction. From ultra-fast track modular wards and ICCUs, to multi phased refurbishments in live clinical environments and traditional domestic scale buildings in sensitive environmental areas.

“The Design Team provided exactly what the Trust required.”

Jim Robinson, Design Director, City Hospitals Sunderland NHS Foundation Trust.



120 Bed Ward & 18 Bed ICCU, Sunderland Royal Infirmary. 2011. By Andy Bridger and Deborah Carr whilst at HDP.

Our buildings are about the detail

The devil is in the detail. We ensure your project is detailed to the highest standards. Crisp clean lines, functionality, coordination, simplicity, buildability; all every day values that form part of our way of working.

“This is one of the most carefully designed intensive care units in the country... It gives patients and their families the reassurance that they are receiving the best possible treatment in the most modern of settings.”

Dave McNicholas, ICU Manager, City Hospitals Sunderland NHS Foundation Trust.



Our buildings are about the patients

Good quality therapeutic design is key for the delivery of good quality care and leads to more positive outcomes for patients, staff and families.

“ the centre is a fantastic facility for patients and their families to be treated in”

Mr Chris Raine, Consultant Otorhinolaryngologist, Head & Neck Surgeon at the Bradford Royal Infirmary, on The Listening For Life Centre.



Our buildings are about creating communities

Places where social interaction enhances people's lives. Where care can be delivered at every stage of a person's life, in an environment which provides them with independence and dignity.

Careful planning of everyday environments is a core element of what we do.

“Bridger Carr have delivered a beautiful environment for us which, our residents will be proud to call their home.”

Chris Womack, Director.
Maria Mallaband Care Group.



11 Apartment Care Home, Kingswood, Surrey. 2012. By Bridger Carr Architects.

Our buildings are about sustainability

Sustainability is intrinsic to the way we design our buildings. From the outset of any project the environmental credentials of a building need to be right. We understand the challenges that face our Clients in meeting carbon reduction targets. We can help you develop the optimum solution.

“You can forget the idea that a low-carbon future will be boring and dull, it can be exciting, as aspirational as we want, so let's make it happen”

Will Day, Chairman, Sustainable Development Commission (February 2010)

Our process is about engagement

We look to inspire you, to engage with you because we know this leads to a better understanding of you.



Our process is about clarity

We have invested in the latest BIM software, utilizing the Revit platform in conjunction with ADB (DoH Activity Data Base). We use these tools throughout the office from Director level down, to model the spaces in which care will be delivered, to provide you, our Clients and Users, with a true understanding of your building; something we believe is vital in delivering healthcare environments.

BRIDGER | CARR and BIM
Decontamination Unit
Critical Care Unit
Temple Bank House



Bradford Royal Infirmary, Critical Care Unit.



Bradford Royal Infirmary, Temple Bank House Medical Research Offices.

Our buildings are our experience



Bridger Carr Architects project history

Special Care Baby Unit	£1.5M	2023	Rotherham General Hospital	ENT Theatres Ventilation Replacement	£3.4M	2021	Dental Teaching Unit	Feasibility	2019	Corridor Design,	-	2015
Hand Surgery Unit	£1.4M	2023	Bradford Royal Infirmary	Bradford Royal Infirmary	£1.9M	2021	Bereavement Suite	£350K	2019	Airedale General Hospital	Feasibility	2015
Gamma Camera	£150K	2023	Rotherham General Hospital	Rotherham General Hospital	£960K	2021	Queen Elizabeth Hospital, Kings Lynn	£15M	2019	CAMHS Unit,		
Endoscopy Vent	Feasibility	2023	Bradford Royal Infirmary	New Cross Hospital	£1.2M	2021	Emergency Department Feasibility	£500K	2018	Leeds Community Healthcare Trust	£250K	2015
Same Day Emergency Care	£2.5M	2023	St. James's University Hospital	Seacroft Hospital	£550K	2021	Essential Fire Upgrades	£250K	2018	Airedale General Hospital	£70K	2015
Theatre & Ward Block Feasibility	£7.2M	2023	Harrogate District Hospital	Discharge Lounge	£315K	2021	Scunthorpe General Hospital	£710K	2018	Out Patients Department Entrance,		
Radiology Services	£3.5M	2023	Harrogate District Hospital	Breathing Space	£250K	2021	Queen Elizabeth Hospital, Kings Lynn	£2.45M	2018	CaSH Clinic,	Feasibility	2015
MHRA	£150K	2023	Rotherham General Hospital	Resus Negative Pressure Rooms	£520K	2021	Queen Elizabeth Hospital, Kings Lynn	£1.9M	2018	Leeds Community Healthcare Trust	£2.25M	2015
Bradford Institute for Health Research	£1M	2023	Bradford Royal Infirmary	Rotherham General Hospital	Feasibility	2021	St. James's University Hospital	£400K	2018	Endoscopy Unit,	£240K	2014
Breast Screening Unit	£2.57M	2023	Harrogate District Hospital	Emergency Department Entrance	Feasibility	2021	St. James's University Hospital	£1.2M	2018	Bradford Royal Infirmary	£550K	2014
Enhanced Care Beds	£200K	2023	Chapel Allerton Hospital	ED Streaming	Feasibility	2021	High Tech Manufacturing Facility	£12.5M	2018	Bradford Royal Infirmary	£750K	2015
Ophthalmology	£4M	2023	St. James's University Hospital	Critical Care Unit	Feasibility	2021	AI Fabtech	£4.45M	2017	Temple Bank House Medical Research Office,		
Plant Rooms	£1.35M	2023	Harrogate District Hospital	Rotherham General Hospital	Feasibility	2021	Maternity Reconfiguration	£2M	2017	Bradford Royal Infirmary	£50K	2014
Wards J42 & J43	£3.4M	2023	St. James's University Hospital	X-Ray and Day Case Surgery	Feasibility	2021	New Cross Hospital	£12.5M	2018	Hannah House Refurb.,		
SALIX Advisory	-	2023	Harrogate District Hospital	Bradford Royal Infirmary	£2.3M	2020	Theatre Upgrades	£4.45M	2017	Leeds Community Healthcare Trust	£350K	2014
Endoscopy Extension	£1.5M	2023	Bradford Royal Infirmary	Wards J42 & J43 Feasibility	£2.7M	2020	Hull Royal Infirmary	£2M	2017	Bradford Royal Infirmary	£70K	2014
Emergency Department Fit to Sit & ED Majors	£1.46M	2023	Harrogate District Hospital	Dental Unit	Feasibility	2020	Multi Storey Car Park	-	2017	Main Entrance Retail Unit,		
Wensleydale Ward & ED2	£4M	2023	Harrogate District Hospital	Chapel Allerton Hospital, Leeds	Feasibility	2020	Medico Legal Centre, Mortuary and Courtrooms.	£4.5M	2017	Airedale General Hospital	£300K	2014
MRI Radiology Feasibility	£2M	2023	Princess Royal University Hospital	Education Centre	Feasibility	2020	Sheffield	£450K	2017	Burmantofts Health Centre,		
Staff Change	Feasibility	2022	Rotherham General Hospital	Rotherham General Hospital	Feasibility	2020	Cancer Day Case Unit,	£1M	2017	Leeds Community Healthcare Trust	£2M	Feasibility
High Observation Area	£170K	2022	Leeds General Infirmary	Staff Change	Feasibility	2020	Bradford Royal Infirmary	£2M	2017	Bradford Royal Infirmary	£70K	2014
Keppel Ward	£1.7M	2022	Rotherham General Hospital	Queen Elizabeth Hospital, Kings Lynn	£2M	2020	Neonatal Feasibility Study,	-	2017	Acute Medical Unit Refurb.,	£150K	Feasibility
Labour Suite	Feasibility	2022	Rotherham General Hospital	Queen Elizabeth Hospital, Kings Lynn	£350K	2020	Liverpool Women's Hospital	£450K	2017	Airedale General Hospital	£100K	2014
Ambulance Pickup	£225K	2021	Rotherham General Hospital	Queen Elizabeth Hospital, Kings Lynn	£750K	2020	Liverpool Women's Hospital	£1M	2017	Seacroft Health Centre Refurb.,		
Operational Command Room	Feasibility	2021	Rotherham General Hospital	Churchill Ward Refurbishment	£250K	2020	Gynaecology Ward,	£2M	2017	Leeds Community Healthcare Trust	£4.2M	2014
Children's Ward	Feasibility	2021	Rotherham General Hospital	Queen Elizabeth Hospital, Kings Lynn	£250K	2020	Liverpool Women's Hospital	-	2017	Critical Care Unit,		
Robotic Pharmacy	Feasibility	2021	Rotherham General Hospital	Feltwell Ward Refurbishment	Feasibility	2020	NOVA Ward,	-	2017	Bradford Royal Infirmary	£70K	2014
Ward C6	£1.9M	2021	Chapel Allerton Hospital, Leeds	Queen Elizabeth Hospital, Kings Lynn	Feasibility	2020	St. James's University Hospital	-	2017	Airedale General Hospital	£195K	2013
Well Being Garden	-	2021	Rotherham General Hospital	Churchill Ward Refurbishment	£250K	2020	St. James's University Hospital	-	2017	Airedale General Hospital	£150K	2013
SCBU Feasibility	Feasibility	2021	Rotherham General Hospital	Queen Elizabeth Hospital, Kings Lynn	£250K	2020	Fluoroscopy Suite,	£1M	2017	Laundry Department Refurb.,		
Replacement of Main Reservoirs	Feasibility	2021	Scunthorpe General Hospital	Feltwell Ward Refurbishment	Feasibility	2020	St. James's University Hospital	-	2017	Airedale General Hospital	£105K	2013
Staff Changing Facilities	£700K	2021	Bradford Royal Infirmary	Queen Elizabeth Hospital, Kings Lynn	Feasibility	2020	MRI Suite,	-	2017	Acute Medical Unit Refurb.,	£150K	2013
				Queen Elizabeth Hospital, Kings Lynn	Feasibility	2020	CT Suite,	-	2017	Airedale General Hospital	£370K	2013
				Queen Elizabeth Hospital, Kings Lynn	Feasibility	2020	Oral Maxillofacial Services,	£100K	2016	New Macular Unit,		
				Queen Elizabeth Hospital, Kings Lynn	Feasibility	2020	Logistic Centre Extension,	-	2016	Acute Medical Unit Refurb.,		
				Queen Elizabeth Hospital, Kings Lynn	Feasibility	2020	Torque Logistics Ltd, Leeds	£100K	2016	Dementia Unit Refurbishment		
				Queen Elizabeth Hospital, Kings Lynn	Feasibility	2020	Corridor Design,	-	2016	Airedale General Hospital	£470K	2013
				Queen Elizabeth Hospital, Kings Lynn	Feasibility	2020	Hull Royal Infirmary	-	2016	Pathology Department Refurb,		
				Queen Elizabeth Hospital, Kings Lynn	Feasibility	2020	Rockfield Farm,	£1.2M	2016	Airedale General Hospital	£3M	Business Case
				Queen Elizabeth Hospital, Kings Lynn	Feasibility	2020	Residential Development	-	2016	New Theatre Block,		
				Queen Elizabeth Hospital, Kings Lynn	Feasibility	2020	Make Ready Design Guide,	-	2016	Endoscope Decontamination Unit, Bradford Royal	£1.85M	Planning
				Queen Elizabeth Hospital, Kings Lynn	Feasibility	2020	Lawkland Barns,	-	2016	Infirmary		
				Queen Elizabeth Hospital, Kings Lynn	Feasibility	2020	Multi Unit Residential Development	-	2016	11 Apartment Care Home, Kingswood, Surrey	£2M	2012
				Queen Elizabeth Hospital, Kings Lynn	Feasibility	2020	Bransholme X-Ray Facility,	-	2016	Consultancy	-	2012
				Queen Elizabeth Hospital, Kings Lynn	Feasibility	2020	Citycare / Hull & East Yorkshire NHS FT	-	2016	Sunderland Royal Hospital		
				Queen Elizabeth Hospital, Kings Lynn	Feasibility	2020	Multi-Site Refurbishment,	£150K	2015	Gastroenterology Unit,	£3.5M	Feasibility
				Queen Elizabeth Hospital, Kings Lynn	Feasibility	2020	Yorkshire Ambulance Trust			Bradford Royal Infirmary		
				Queen Elizabeth Hospital, Kings Lynn	Feasibility	2020	Make Ready Ambulance Refurb,					
				Queen Elizabeth Hospital, Kings Lynn	Feasibility	2020	Yorkshire Ambulance Trust					

Project experience of Andy Bridger & Deborah Carr whilst working at previous practices

Residential extension, Bramhope	£160K	2012	Catering & Renal Unit	£12M	2007
Medical Research Centre, Bradford Royal Infirmary	£1.55M	2011	Bradford Royal Infirmary		
120 Bed Ward accommodation and ICU, Sunderland Royal Hospital	£19.5M	2011	Haematology Day Case Unit Refurbishment	£180K	2007
Doncaster HUB Poly-Clinic, Doncaster LIFT	£8M	2011	Bradford Royal Infirmary	£755K	2007
Residential extension, Horsforth	£130K	2011	Pathology Lab Alterations,		
Residential extension, Moorland Road, Bramhope	£90K	2010	Bradford Royal Infirmary	£300K	2007/08
High Dependency Unit, Bradford Royal Infirmary	£3.5M	Feasibility	Ward 3, 4 & 6 Upgrade,		
56 Bed Modular Ward Accommodation, Lincoln County Hospital	£8.3M	2010	Bradford Royal Infirmary	£4.5M	2007
Strategic Master Plan	£85M	Feasibility	City Mortuary,		
Endoscopy Unit	£1.7M	2010	Hull Royal Hospital	£175K	2007
Calderdale Royal Hospital			Cardiology Unit, Ward 22		
Catering Block refurbishment, Sunderland Royal Hospital	£200K	2009	Bradford Royal Infirmary	£1.25M	2007
The Listening For Life Centre, The Ear Trust, Bradford	£2M	2009	Chapel of Rest		
Fraser Community Hall Refurb, Kirby Lonsdale	£45K	2009	Castle Hill Hospital		
56 Bed Modular Ward Accommodation, Bradford Royal Infirmary	£8.5M	2008	Off corridor Storage/Waste Management	£2M	2007
Strategic Master Plan	£70M	Feasibility	Feasibility Study, Bradford Royal Infirmary		
EPAU,	£500K	Feasibility	New Mortuary, Serialisation Unit & Theatres	£10M	2006
Calderdale Royal Hospital			Sunderland Royal Hospital		
Intermediate Care Unit	£500K	Feasibility	Home Office Forensic Mortuary,	£1M	2006
Calderdale Royal Hospital			Leicester Royal Hospital NHS Trust		
Energy Conservation,	£4.5M	2009	Semi Detached Residences, Heaton, Bradford	£250K	2006
Sunderland Royal Hospital					
Martinwells Centre,	£5M	2009	Residential extension,	£150K	2005
Edlington, Doncaster LIFT			Rawdon		
Wheelchair Assessment Centre, Doncaster PCT	£500K	Feasibility	Housing Improvement Scheme, Bradford	-	Feasibility
Wards 2, 8, 9, 11, 14, 18 Upgrades, Bradford Royal Infirmary	£750K	Feasibility			
Orthopaedic Ward Upgrade,	£250K	2009	Grace Baptist Church,	£420K	2005
Pain Management – St. Luke's	£450K	2008	Halifax		
Bradford Teaching Hospitals NHS Foundation Trust			Russell House Children's Hospice and Respite Centre,	£2M	Planning
HDU Unit Refurbishment, Bradford Royal Infirmary	£200K	Feasibility	The Forget-Me-Not Trust		
Convalescent & Treatment Centre,	£1M	2009	Drummond Mill Conversion,	£10.2M	Planning
Nursery Facilities	£1.25M	Planning	SKA Textiles, Bradford		
Royal Liverpool & Broadgreen University Hospitals NHS Trust			Drug Dependency Clinic and PCT Offices,	£200K	2004
Brachytherapy Facility,	£1.2M	2009	Bradford PCT		
Castle Hill Hospital			Lakeside Mixed Use Development, Doncaster	-	Competition
Infrastructure Feasibilities,	£3M	2007			
Bradford Royal Infirmary			Boaters' Station,	-	Feasibility
			Clarence Docks, Leeds		
			West Thorpe Residential Care Home refurbishment, Whitby	£500K	Planning
			Glebe Farm Residential Development, Thirsk	£1M	2004
			Roseberry House GP's Surgery, Bradford	£200K	Feasibility
			Thorpe's Timber Yard, Bramham	£1M	Planning
			Croft House, Thirsk	£500K	Planning
			Sycamore Lodge, Leeds	£1M	Feasibility
			Broadway Medical Centre, Fleetwood	£4M	Planning
			Education Centre Farfield Hospital, Bury	£1.1M	2003
			Salford Mortuary,	£700K	2001
			Hope Hospital		

Aseptic Unit,	£850K	2003
Royal Liverpool University Hospital, Liverpool		
Extension to Operating Dept	£2.2M	2002
Fazakerley Hospital, Liverpool		
Dermatology Out-Patient Facility,	£1.2M	2002
Broadgreen Hospital, Liverpool		
Cardiothoracic Centre	£85M	2002
Broadgreen Hospital Liverpool		
Sterile Supplies Department,	£2.5M	2001
Hope Hospital, Salford		
Upgrading / extension of A&E Dept	£2.6M	2000
Fazakerley Hospital. Liverpool		
Retail & Development & upgrading of main entrance and public areas	£700K	2000
Fazakerley Hospital, Liverpool		
Lecture Theatre Refurbishment,	£1.3M	2000
Royal Liverpool University Hospital		
Acute Medical Assessment Unit,	£2.2M	2000
Royal Liverpool University Hospital		
Main entrance upgrade & retail facilities,	£1.4M	1999
Addenbrooke's Hospital, Cambridge,		
Reconfiguration of A&E Dept	£100K	1999
Royal Liverpool Uni. Hospital		



Bridger Carr™ Architects

Leeds Office

Tower Works

Unit 00/04

2 Globe Road

Leeds

LS11 5QG

t: 0113 234 0146

Manchester Office

Piccadilly House

49 Piccadilly

Manchester

M1 2AP

t : 0161 826 9155

e: team@bridgercarr.com

www.bridgercarr.com

NHS

Shared Business Services

FRAMEWORK AGREEMENT SUPPLIER

Bridger Carr Architects is a trading name of Bridger Carr Ltd

Registered in England and Wales No: 08050494

Registered office: 1 Edmund Street : Bradford : West Yorkshire : BD5 0BH

© 2023 Bridger Carr™ Ltd